



## Lawrence House

WASHINGTON, DC

### Project Address

2331 15th Street NW, Washington, DC 20009

### Architect(s)

[Akseizer Design Group](#)

### Project Quantity

38,700.00 Square Feet

### Completion Date

October 2015

### Project Links

[Akseizer Design Group](#), [Lawrence House](#), [Lawrence House Facebook](#)

### Applications

Multifamily + Residential

### Material Specifications

*Manufacturer | Product Line (Details)*

Kahrs | Spirit / Unity Collection (Garden Walnut)

Trinity Tile | Cotton (Silver)

Trinity Tile | Cotton (Amber)

QT Sound Control Underlayment | 2mm ( )



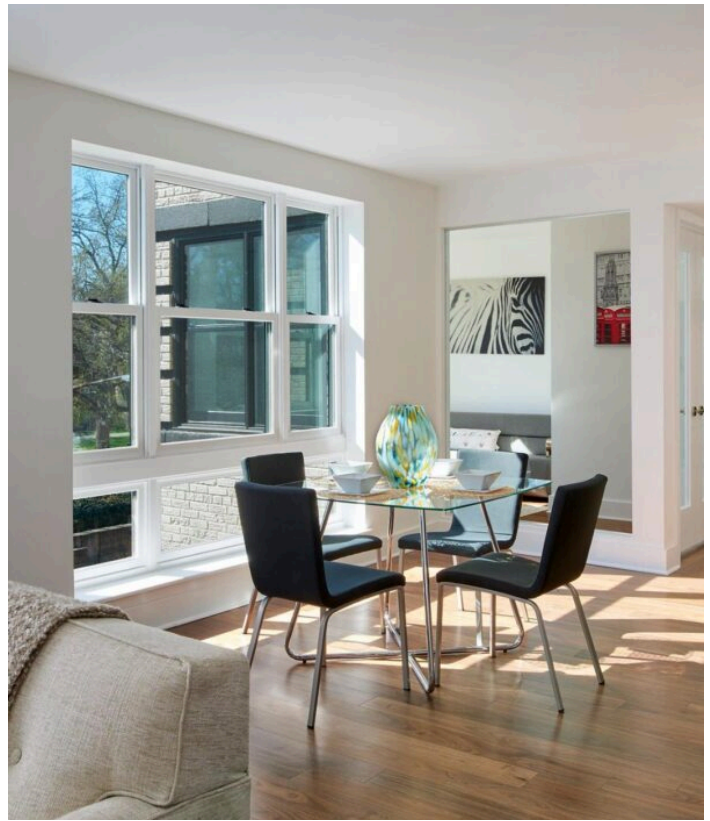


Photo Credit(s): IMAGE CREDIT TO READ: "©Anice Hoachlander/ Hoachlander Davis Photography" THIS IMAGE MAY NOT BE PUBLISHED, ONLINE OR OTHERWISE, WITHOUT THE PERMISSION OF HOACHLANDER DAVIS PHOTOGRAPHY FOR USAGE PERMISSION, contact Hoachlander Davis Photography: [info@hdphoto.com](mailto:info@hdphoto.com) (202) 364-9306 HDPhoto retains the rights to marketing and editorial licensing fees paid by publications. Images not transferrable to a third party.